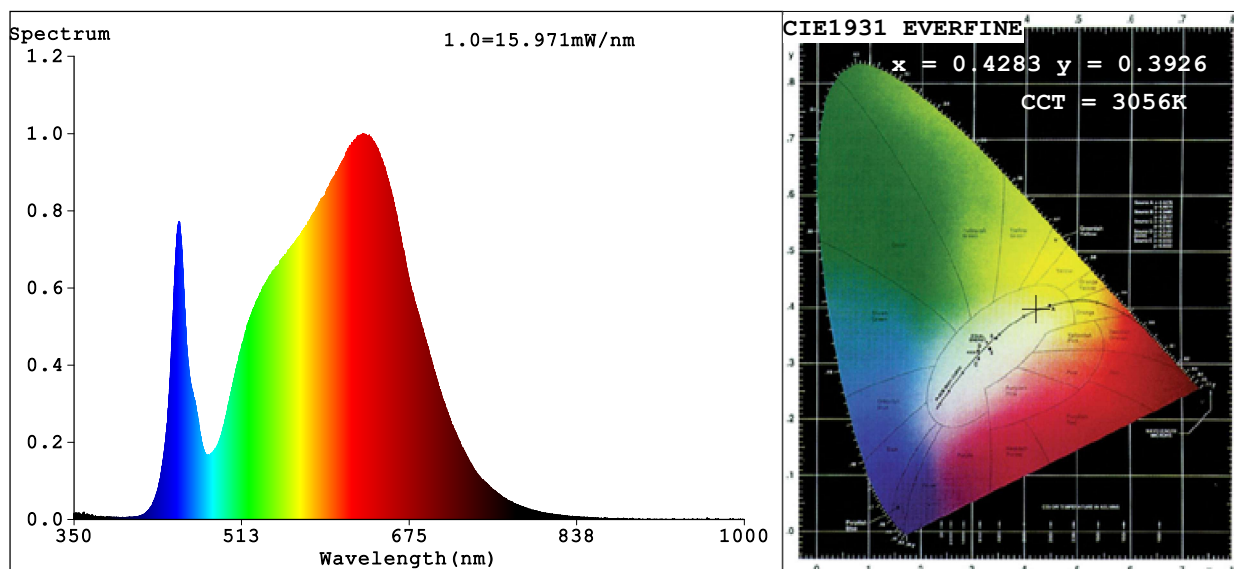


Spectrum Test Report



Color Parameters:

Chromaticity Coordinate: $x=0.4283$ $y=0.3926$ $u'=0.2499$ $v'=0.5155$

CCT=3056K (Duv=-0.0034) Dominant WL:Ld =583.9nm Purity=46.4%

Ratio:R=24.0% G=73.4% B=2.5%; Peak WL:Lp=630.0nm FWHM=169.7nm

Render Index:Ra=92.5 CRI=89.5 TM30:Rf=88 Rg=104

R1 =94 R2 =95 R3 =92 R4 =92 R5 =93 R6 =91 R7 =94

R8 =89 R9 =74 R10=85 R11=92 R12=74 R13=94 R14=95 R15=93

Photo Parameters:

Flux = 797.5 lm Eff. : 63.74 lm/W Fe = 2.887 W

Electrical parameters:

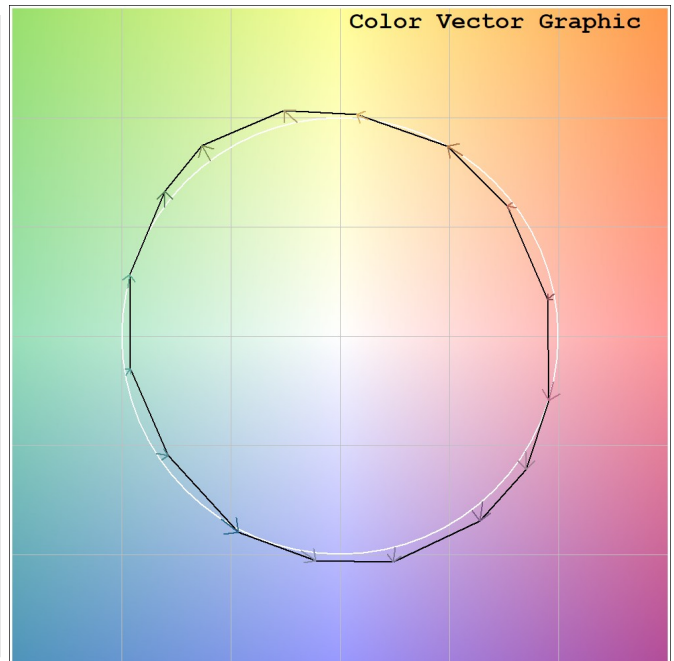
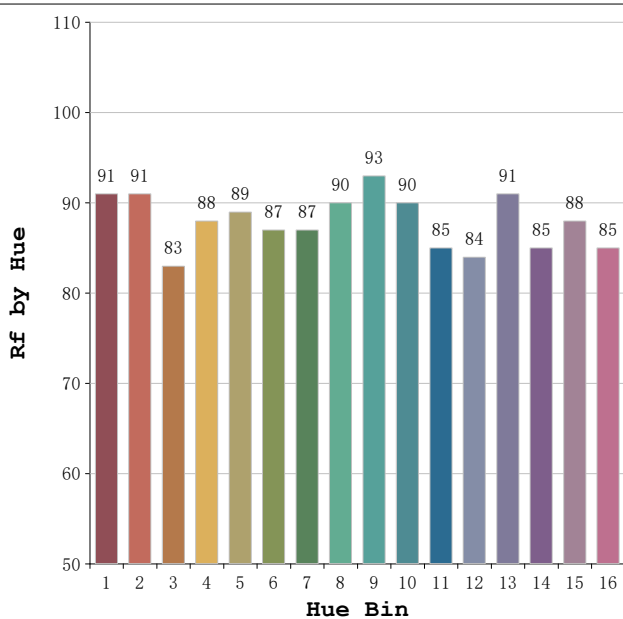
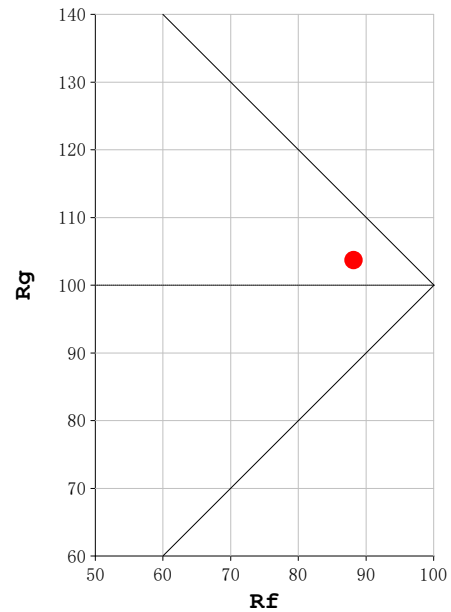
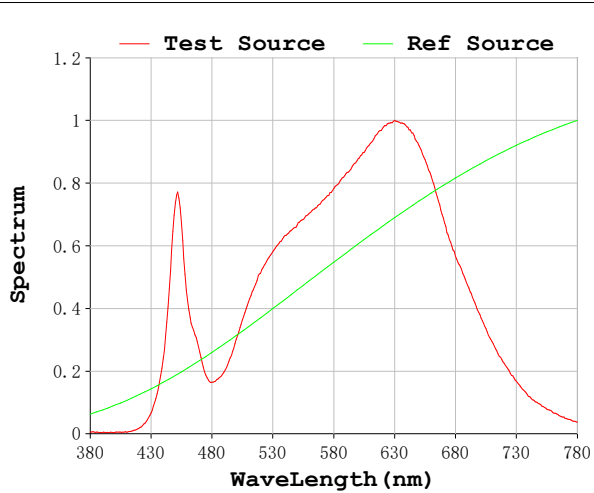
V = 23.998 V I = 0.5214 A P = 12.51 W PF = 1.000

Status: Integral T = 1652 ms Ip = 47307 (72%)

Model:Ecoled Neón Cairo 3000
Tester:Sergio Carneros
Temperature:20Deg
Manufacturer:Luz Negra

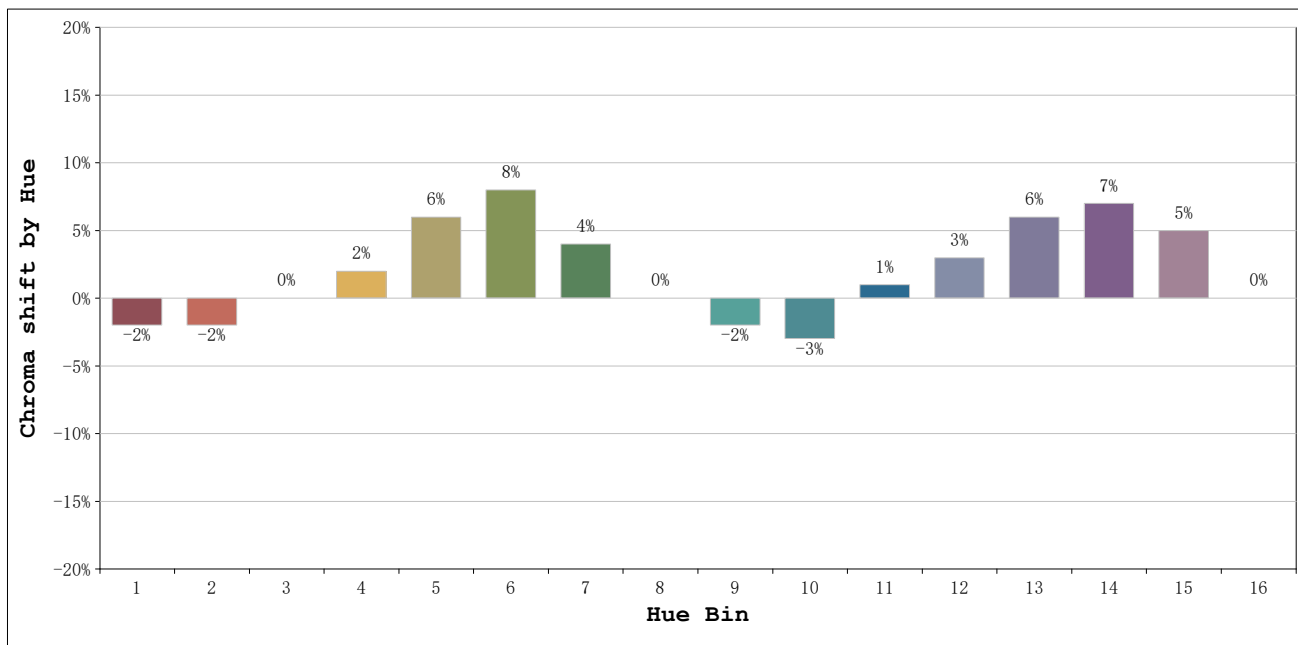
Number: 10.263
Date:2025-03-25 13:06:17
Humidity:50%
Remarks:100cm de neón

Rf: 88 **CCT: 3056 K** **u': 0.2499**
Rg: 104 **Duv: -0.0034** **v': 0.5155**



Model:Ecoled Neón Cairo 3000
 Tester:Sergio Carneros
 Temperature:20Deg
 Manufacturer:Luz Negra

Number: 10.263
 Date:2025-03-25 13:06:17
 Humidity:50%
 Remarks:100cm de neón



			Graphic shift(%)	
Hue Bin	Hue Angle	Rf	Chroma	Hue
1	0.0° - 22.5°	91	-2	-1
2	22.5° - 45.0°	91	-2	3
3	45.0° - 67.5°	83	0	8
4	67.5° - 90.0°	88	2	6
5	90.0° - 112.5°	89	6	5
6	112.5° - 135.0°	87	8	0
7	135.0° - 157.5°	87	4	-5
8	157.5° - 180.0°	90	0	-5
9	180.0° - 202.5°	93	-2	-1
10	202.5° - 225.0°	90	-3	4
11	225.0° - 247.5°	85	1	10
12	247.5° - 270.0°	84	3	7
13	270.0° - 292.5°	91	6	-1
14	292.5° - 315.0°	85	7	-5
15	315.0° - 337.5°	88	5	-6
16	337.5° - 360.0°	85	0	-8

Model:Ecoled Neón Cairo 3000
 Tester:Sergio Carneros
 Temperature:20Deg
 Manufacturer:Luz Negra

Number: 10.263
 Date:2025-03-25 13:06:17
 Humidity:50%
 Remarks:100cm de neón